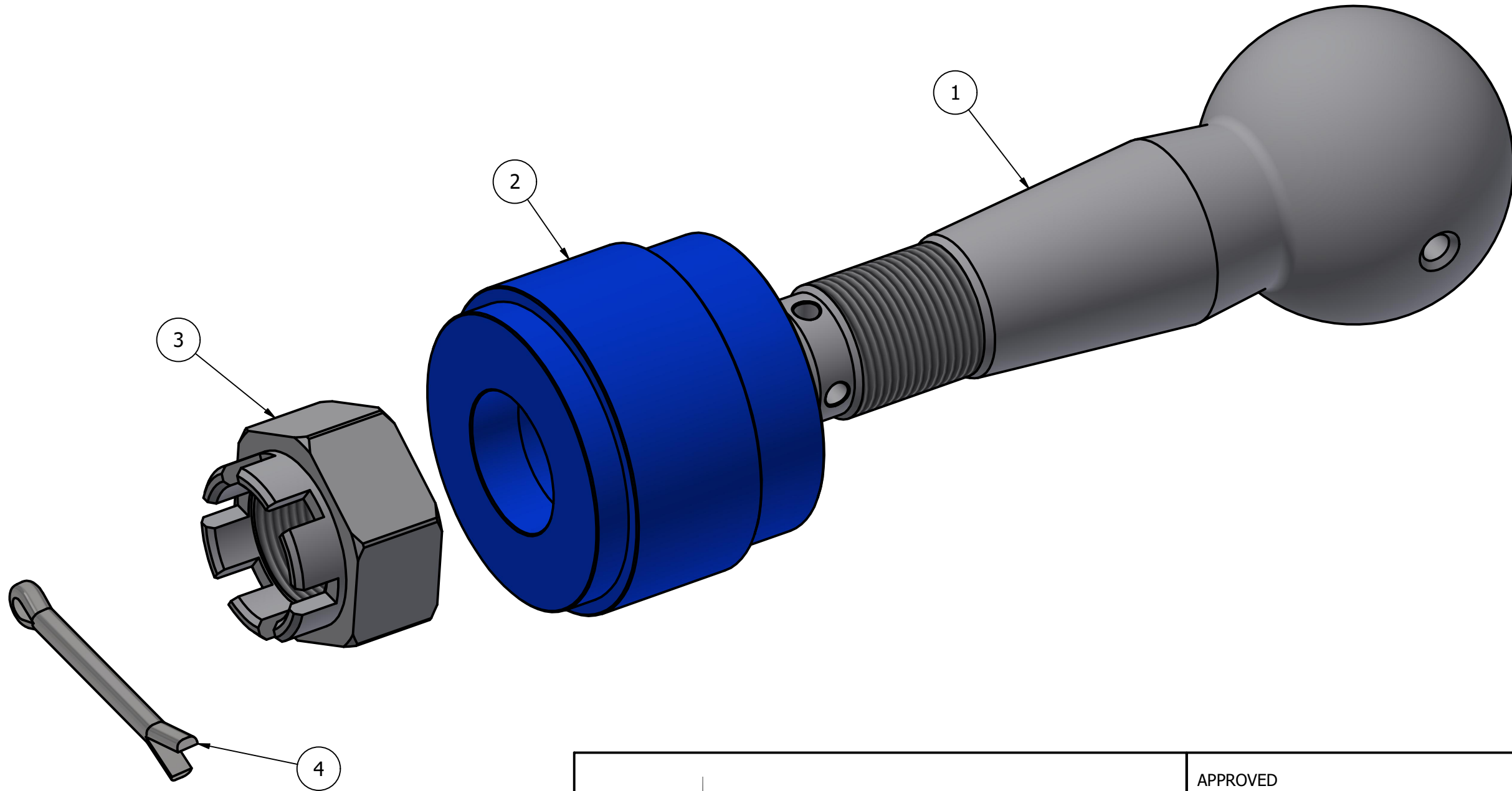


NOTE:
ALL THREADED PARTS TO BE GREASED
WITH COPPER COMPOUND

PARTS LIST					
ITEM	QTY	PART NUMBER	MATERIAL	DESCRIPTION	MASS
1	1	BC_100_MAL_MS_BALL PIN	MS	RB 105 X 270	7,025 kg
2	1	BC_100_MAL_MS_SLEEVE	MS	RB 110 X 90	4,454 kg
3	1	BC_100_MAL_MS_NUT	MS	70ACF/80CTC HEX BAR X 53	0,804 kg
4	1	8MM x 80	MS	Split cotter pins	0,040 kg



NO TRANSFER OF INTELLECTUAL PROPERTY : Any & all drawings, documentation, information or data provided by AMF to be used solely for the use intended by AMF, nor may it be shared, copied, distributed or disseminated in any manner whatsoever. All intellectual property, including AMF's drawings, shall remain the sole property of AMF.



APPROVED R.P.M.J.		
TITLE MALE BALL COUPLING PARTS ASSEMBLY		
SIZE A3	DWG NO AMF_BC_MAL_MS_MS	REV
SCALE 1 : 1	SHEET 1 OF 1	